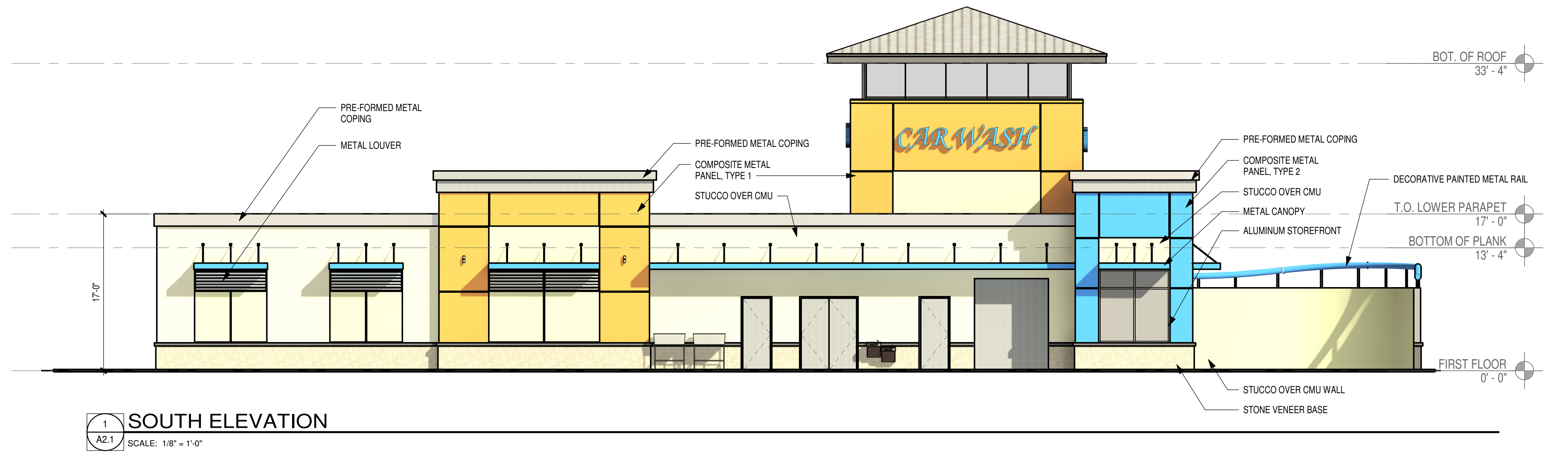
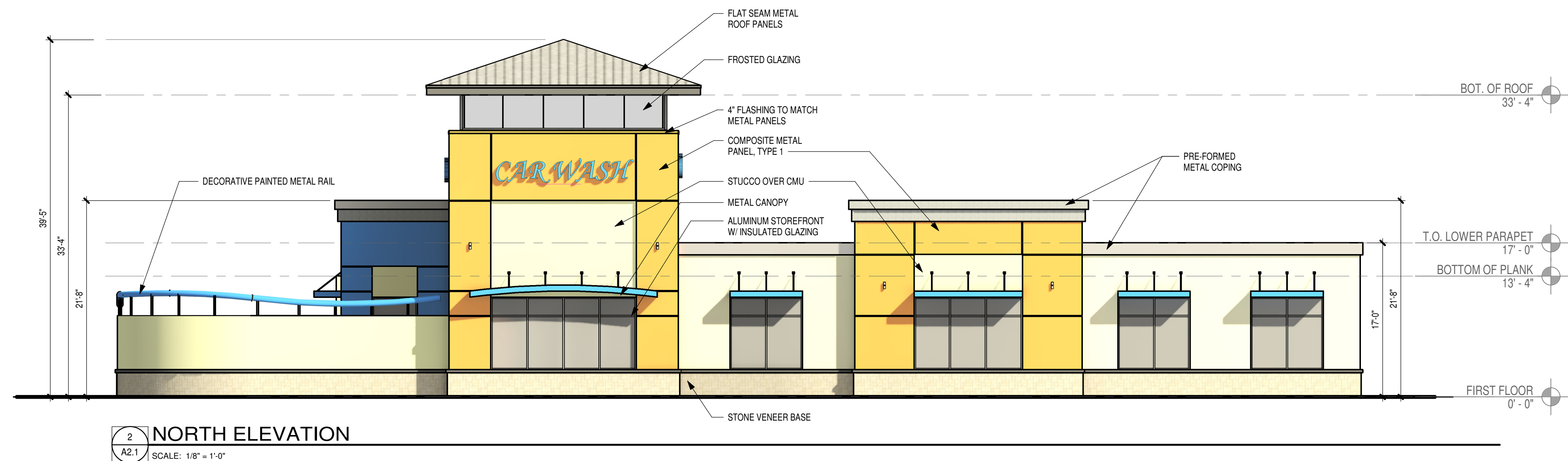
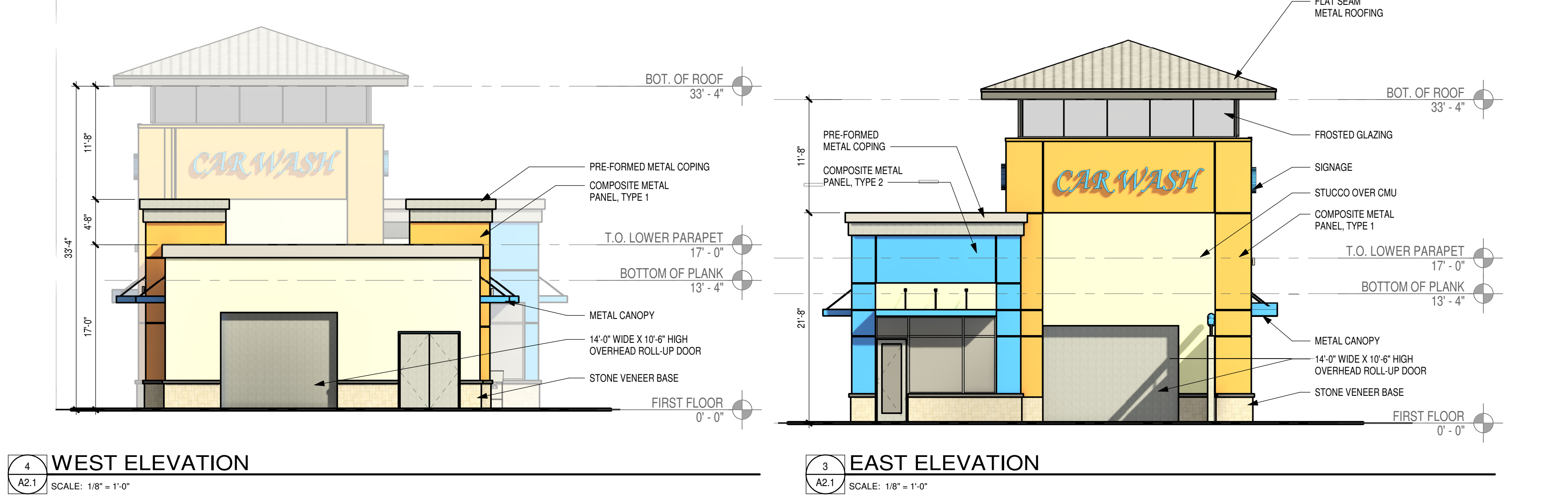


DRC

PZ25 12000044
12/17/2025

EXTERIOR FINISHES LEGEND

STUCCO OVER CMU	SHERWIN WILLIAMS EXTERIOR PAINT - SW 0050 "CLASSIC LIGHT BUFF"
COMPOSITE METAL PANEL, TYPE 1	ALUCOBOND - "TUSCON SUN"
COMPOSITE METAL PANEL, TYPE 2	ALUCOBOND - "AMAZON PRIME BLUE"
STONE VENEER BASE	ELDORADO STONE - COSTALREEF "PEARL WHITE"
PRE-FORMED METAL COPING	LIGHT GRAY
ALUMINUM STOREFRONT SYSTEM	LIGHT GRAY
METAL CANOPY	PAINTED TO MATCH ALUCOBOND "AMAZON PRIME BLUE"
METAL ROOF PANELS	LIGHT GRAY

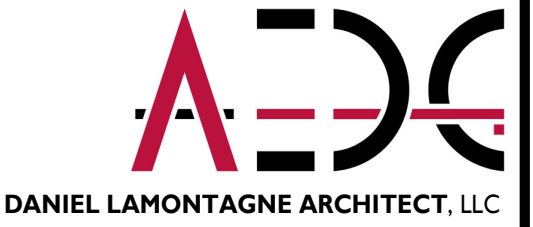


PROJECT NAME:

GRIGGS EXPRESS
CAR WASH

BUILDING NAME & ADDRESS
1401 SOUTHWEST 26TH AVENUE
POMPAHO BEACH, FLORIDA 33069

ARCHITECT:

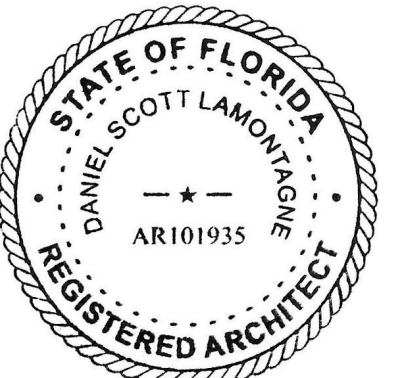


DANIEL LAMONTAGNE ARCHITECT, LLC

FACTORY SQUARE
168 CENTER STREET, SUITE 113
SOUTHINGTON, CT 06489
V: 860-621-9348
F: 860-276-9962

CONSULTANTS:

STAMP AREA:



DIGITAL SIGNATURE:

ISSUE:

SITE PLAN SUBMISSION
11/12/2025

ARCHITECT PROJECT #:
25021

REVISIONS:



DRAWING TITLE
EXTERIOR ELEVATIONS

SCALE 1/8" = 1'-0"	DRAWN BY MG
CAD FILENAME 25021-ARCH-V2.RVT	DATE 11/12/2025
DRAWING NUMBER	

A2.1